

Grady-White Canyon 456 (2018-) (w/ Currently no test numbers)

Brief Summary

The folks at Grady-White tell us that they conceived and designed the new Canyon 456 to be a luxurious – "no-compromise" – sportfishing yacht with virtually every practical amenity built in that they could imagine. With a 21-degree deadrise at the transom, a 14' beam, a fuel capacity of 616 gallons (2,332 L) and quad Yamaha 350 outboards, she is intended to go virtually anywhere in most conditions. The level of detail, built-in comfort, and innovation is noteworthy for a boat of this size. Belowdecks, she has a large, standup head, good-sized galley, and a convertible dinette that seats four and sleeps two. But all of that is just the tip of this iceberg.

Key Features

- 2 automatic bilge pumps (total 4,000 GPH) (15,142 LPH)
- Anchor windlass w/remote switches at helm & windlass
- Deck hardware - 316-grade stainless steel through-bolted
- Air conditioning - 16,000 BTU w/outlets at helm (4) & aft seats (3)
- Forward hatch - low profile acrylic hatch w/retractable screen shade
- Stainless steel through-hull fittings
- Fuel capacity - 616-gallon (2,332 L) (2 - 308 gal. tanks)
- Rod storage - retractable vertical storage rack under port countertop (4)

Specifications

Length Overall	45' 13.72 m
Beam	14' 4.27 m
Dry Weight	24,500 11,113 kg
Tested Weight	N/A
Draft	30" .76 m
- Draft Up	N/A
- Draft Down	N/A
- Air Draft	N/A
Deadrise/Transom	21-degrees
Max Headroom	
Bridge Clearance	10' 5" 3.18 m
Weight Capacity	N/A
Person Capacity	N/A
Fuel Capacity	616 gal. 2,332 L
Water Capacity	80 gal. 303 L
Length on Trailer	N/A
Height on Trailer	N/A
Trailer Weight	N/A
Total Weight (Trailer, Boat, & Engine)	N/A

Prices, features, designs, and equipment are subject to change. Please see your local dealer or visit the builder's website for the latest information available on this boat model.



Related Items



180 Fisherman (2011-)



Fisherman 180 (2015-)



191 CE (2015-)



Freedom 192 (2015-)



Fisherman 216 (2018-)



Freedom 225 (2015-)



Gulfstream 232 (2015-)



Fisherman 236 (2016-)



Freedom 215 (2017-)



Freedom 235 (2016-)

Engine Options

Std. Power	350-hp Yamaha Four-Stroke (Quad)
Tested Power	Currently no test numbers
Opt. Power	Not Available

Editor's Report

Contents of Report

- Mission
- The Helm
- Performance and Handling
- Special Equipment
- Price
- Observations



The new Grady-White Canyon 456 made her debut at the Miami boat show last month. We think she is the best boat that Grady has ever built.

Mission

The Grady-White Canyon 456 was created for those looking for the top-of-the-line alternative to traditional sportfishing convertibles which cost several million dollars, usually require a paid captain, and have annual maintenance costs that can easily go into six digits. It is also positioned for anglers wanting to move up to a sportfishing machine that is also a large, comfortable yacht, but still be easily handled. In the process, virtually every creature comfort that Grady's engineers could imagine was baked into the boat.



The helm is fully-enclosed on three sides with the instrument and steering wheel offset to starboard. The companionway hatch is to port. The port and starboard side panels of the windshield slide open to allow fresh air to flow through on the good weather days.



251 CE (2015-)



Freedom 255 (2015-)



Canyon 271 FS (2016-)



Freedom 275 (2016-)



Tournament 275



Freedom 285 (2016-)



Express 305



Canyon 306 (2017-)



Freedom 307 (2015-)



Marlin 300 (2017-)



Canyon 336

The Helm

Grady-White calls its helm a “Sea Command Center™” and has trademarked the term to emphasize both the care with which it was designed and the technology employed. The helm has four individual forward-facing seats that are each electronically adjustable, and with flip-up bolsters to allow comfort while standing, and flip-down armrests. The builder made them attractive and the multi-density foam substructure has been ergonomically designed to fit the human body and help people stay in their seats as well as to be supporting and comfortable. The seat upholstery is two-tone and the bolsters are comfortable to lean on.

The captain's seat is in the center to starboard, and the wheel, compass, instruments, accessory switches, and all controls are offset to starboard as they should be – rather than centered as we sometimes see that makes everything symmetrical but awkward.



Extremely comfortable seating is a hallmark of the Canyon 456 and nowhere is it more obvious than at the helm. Bolsters, footrests, armrests, and air-conditioning are all part of the bargain.



Note that the hardtop (Grady calls it the AV2 T-top®) extends over the helm seats. Optional side curtains are available to button up the helm area for three-season boating. 16,000 BTUs of air conditioning are available and on chilly days it can reverse cycle and pump out heat. Overhead there is a storage net for PFDs, or other gear.



Express 330



Freedom 325 (2018-)



Freedom 335 (2013-)



Canyon 336 (2015-)



Express 330 (2015-)



Freedom 335 (2015-)



Canyon 366 (2009-)



Canyon 366 (2011-)



Canyon 376 (2016-)



A curved one-piece windscreen with minimum-sized mullions maximize sightlines forward. Vents port and starboard electrically open for fresh air when wanted, but the enclosed design will keep guests comfortable when a chill is in the air. Overhead there is an electrically actuated sunroof with screen and shade. There are blue and white T-top underside lights as well as white LED spreader lights facing fore and aft. The Fusion speakers seen above are part of a standard package of premium sound equipment.

CZone® digital switching technology enables one-touch control of onboard systems including power, electrical, lighting, heat and air conditioning — even the seacocks. This is a complex yet, intuitive system that puts nearly every function of the boat at the captain's fingertips. We usually only see CZone systems on large motoryachts. A software application allows remote command of these functions from the captain's smartphone.

Grady-White's sea chest is a raw-water reservoir that provides raw water for all systems livewells, generator, air conditioning, washdowns, and more. This is a remarkable system and one that we have never seen in this class of boat.

The helm also holds the Fusion stereo system controls for the bow and T-top speakers. A separate Fusion control head is located in the console cabin, and the company uses the latest Fusion Signature Series speakers to deliver the sound everywhere on the boat.

Air-conditioning vents in the dash panel and under the seats will give captain and crew welcome cool air on steamy hot and humid days in the tropics.

Hardtop Enclosure

The entire helm area is covered by a stylish T-top (AV2 T-top®), and three-sided enclosure with an integrated wraparound, one-piece windshield. The forward mullions have been moved slightly back and kept narrow to maximize sightlines. Electric side windows and a large overhead hatch allow in plenty of fresh air, when the heating or 16,000 BTU air conditioning system is not needed. The top includes a built-in SureShade® electronically retractable cockpit shade that extends over the aft-facing seats to keep guests there out of the sun and rain.

On the top are found LED spreader lights forward and aft. Top-of-the-line deluxe GEMLUX® carbon fiber outriggers are available. Underneath the top features LED lighting and a huge netted storage area. Ten rod holders here are fishing-ready. For extra convenience, this boat comes equipped with a remote-controlled anchor light on the T-top, making the transition from day to night as simple as a press of a button. Safety handrails are seamlessly built-in, just where needed.

Stereo System. Grady-White has installed the Fusion Signature series stereo system with AM/FM tuner, MP3 auxiliary audio connections/amplifier, Bluetooth remote, two subwoofers in the cockpit, two speakers in the bow and four speakers in the AV2 T-top at the helm. A separate Fusion stereo system in the cabin has its own subwoofer and two speakers.

With the addition of the optional canvas and Clear2Sea side curtains, the helm can be buttoned up for three season boating. This option creates a tremendous amount of added utility for this yacht, which can really do anything and go most anywhere adventuresome boaters would like.



Express 370 (2017-)



Freedom 375 (2015-)



360 Express (2011-)
Canyon 456 (2018-)



The Canyon 456 is powered by four Yamaha 350-hp engines. Livewells are in the transom both port and starboard, and are 35 gallons (1,321 L) each, with lights and full column distribution inlets, overboard drains and 1500 GPH (5,678 L) pumps. The black rectangle in the transom is a covered 24" screen to show the anglers sonar and navigation data.

Performance and Handling

Hull Design. The Canyon 456 hull was designed by C. Raymond Hunt & Associates, the same firm that has designed all other Grady-White boats since the 1990s. Since Hunt invented and pioneered the deep-V hull design in the early 1960s, it is little surprise that this design firm knows as much as any, and probably much more, than most designers about the nuances of creating a hull that maximizes the comfort aspects of the deep-V concept, while at the same time making the hull as stable as possible and efficient. Grady-White has trademarked its proprietary hull design calling it the SeaV2® design, with a nod to its continuously variable vee; the science behind the exceptional ride, handling and performance of Grady-White hulls.

While not often discussed, the ride and handling characteristics of Grady-White boats are one of their most important features for safety and comfort.

The Numbers. We have not tested the Canyon 456, but look forward to doing so later this spring when hull #2 or #3 is available. Of course, the folks at Grady-White and Yamaha have tested the boat. While they didn't tell us how many people were aboard, or the tankage levels during the test, they did say that the quad 350s were turning 15 ½" x 19" SWS XL SDS props.

They reported a top speed of 55.2 mph at 5900 rpm, getting 0.4 mpg. Best cruise, they say, was found at 3700 rpm where the boat went 31.4 mph, getting .65 mpg. Time from 0 to 30 mph was 8.57 seconds.

Special Equipment

Seakeeper. The Canyon 456 is equipped with a Seakeeper® 6 gyro stabilizer "to give an added element of control in the most extreme sea conditions," according to Grady-White. In normal conditions, it dampens roll significantly. The Yamaha Helm Master® system with Set Point™ is also standard. This system used dual-antenna GPS to engage three primary control modes – Stay Point, Fish Point, and Drift Point.

Trim Tabs. Also standard is the Zipwake® dynamic auto-leveling trim control system that controls both trim and balance, providing constant leveling in turns and when accelerating. It also ensures maximum capability. The Canyon 456 also has a variable speed bow thruster standard, as well.

Generator. The Canyon 456 comes standard with a 12 kW diesel generator with a 30 gallon (114 L) fuel tank. The generator is required to operate the A/C and the Seakeeper systems primarily, as well as to produce an abundance of power for the rest of the boat. It is noteworthy that Grady-White decided not to install a gasoline generator, which would simplify fueling. The reason is that a diesel generator has a much, much lower carbon monoxide risk, greater longevity and less maintenance.

Other Equipment. An electrical bow thruster, 11 gallon (42 L) water heater. An anchor windlass are also installed as standard. With so much electrical equipment aboard, the Canyon 456 has 10 batteries and three battery chargers.



The cockpit and "Sea Command Center" console have about everything imaginable included. Note the stainless steel refrigerator, storage for Plano tackle boxes, and drawers for other gear. The wide center seat, with bolster, for the angler on deck, three conditioning vents and a pull-out footrest. There is room for a fighting chair, if wanted or the optional rod station.



Three, large well-cushioned seats face aft for comfortable cruising or for keeping an eye on the baits. The center seat has a bolster to create a leaning post. The arrows point to amenities that can be seen below – sink, A/C, and grill.

A Remarkable Cockpit

We were impressed by the thought and engineering that has gone into the Canyon 456's cockpit. The 14' (4.27 m) beam allows the integration of the Sea Command Center's aft-facing fishing station, with dedicated air conditioning/heating vents and seating for three in high, dry, and exceedingly comfortable seats. The middle seat has a flip-up bolster that serves as a leaning bar. Tackle storage has room for six Plano boxes plus two additional gear drawers that slide from under the bolstered seating.



To port, forward of the seats is a sink under a swing-up counter that has many uses. The faucet wand raises and lowers and pulls out and can be used to wash off the removable cutting board above.



Behind the center aft-facing seat are three A/C vents to direct cool air on the three anglers or their mates.



To starboard, between the helm and cockpit seats, is an electric grill beneath another flip-up counter.



While this is not a good photo due to the setting sun, what is shown is a 24" protected screen that can display the fishfinder data or navigational details. (Dealer installed option)

Mini-Galley on Deck. Portside there is a sink with an adjustable pull-out faucet hose with spray nozzle. The starboard side has a refrigerator and grill, and both have swing-up cutting board for bait prep or dressing freshly caught fish. When in the down position, these cutting boards become a handy place for beverages or snacks, and the rails around them keep everything in place.

Two Side Doors. Aft port and starboard cockpit side doors are positioned for landing fish, for reboarding swimmers or scuba divers, and for boarding from a dock. There is a hot and cold freshwater shower mounted near the starboard-side door.

Twin livewells – that total 70 gallons (265 L) -- are located in the transom area, port and starboard. Both livewells feed off of the sea chest and have a full column plenum distribution system that allows fresh raw-water to circulate from top to bottom. What sets them apart from many large center consoles is their size. Adjacent is the expansive aft refrigerated/freezer fishbox.

Transom Fishbox. In the center of the transom is a 459 quart insulated refrigerator/freezer fishbox – with lights – that is digitally controlled. Of course, it drains overboard. There are two partitions so that it can be made into three separate compartments to adjust for the catch of the day.



Side doors on each side of this boat make getting on and off at a dock easy. They are also ideal for hauling aboard fish, swimmers, or scuba divers.



Robust hinges and latch will keep the side doors in place. Note that all coamings have large bolsters.

Designed for Trolling

Aft-Facing Seats. One of the most impressive aspects of the Canyon 456 is her functionality combined with luxury. Who has not trolled for hours, looking at the deep blue, watching for signs of curious game fish – and sitting on an ice cooler, fiberglass console, or seat with a straight back and not much padding? Grady-White has banished roughing it while fishing, with its impressive aft-facing raised seating. Raised to give better visibility, and thoroughly cushioned for comfort. Adding to the comfort are air-conditioning vents behind, and the SureShade awning overhead. The center seat has a bolster.

This is far better for trolling and then jumping to action – just one step away -- when there is a strike, than the typical mezzanine seating on a battlewagon.

Show and Tell. On the interior transom bulkhead, facing the three occupants facing aft in trolling mode, is a 24" electronic display screen (dealer installed) so the aft-facing crew can see the fish sounder, and -- depending on the sophistication of the sounder -- anglers can even watch fish rising to the bait. It can also show the exact position of the last strike -- all the information the cockpit crew needs.

More Equipment. The aft transom itself includes a brand-new high-volume overboard-draining scupper system, plus a Glendenning 35', 50-Amp motorized retractable shore power cord. The Canyon 456 is also equipped with the Reverso® pre-programmed engine flushing system. This Grady shines at night at the dock with underwater LED lights. There is a hot and cold freshwater shower with a 20' long Glendenning retractable hose that can cover the width of the 14'-wide cockpit.

There is handy storage for six rods under the aft gunwales and, just forward, additional lockable storage for four more.

Fish-Landing Strategy

Clearly, with such a large distance between the standing angler in the cockpit and fish, a strategy must be in place for landing a game fish and keeping it away from the engines and props. That is one reason why Grady-White has built in two side doors. It is also when the joystick comes in handy. When anglers bring fish closer to the boat, they will probably be fighting from one of the two stern quarters, rather than having the fish directly astern, battlewagon-style.

When the fish is played out, and the angler gets close to bringing the prey close to wire, then the captain will maneuver the boat with one side or the other facing the fish. With the large bolsters around the cockpit, the angler and mate will have plenty of support when leaning over the side, bringing the fish to wire and landing it.

Belowdecks

Access to the belowdecks cabin is via a sliding hatch with screen, located just forward of the portside bridge seat. Once below, to port of the integrated cabin steps, is a cedar-lined locker. Large side windows provide ambient light to fill the interior space. Exotic wood, superb cabinetry, luxurious fabrics, and Corian® countertops make the cabin at the same time both elegant and cozy.

There is a 12,000 BTU reverse-cycle system dedicated to the cabin cooling and heating.

The Galley. Below the portside countertop is a full-size microwave drawer, and a six-bottle wine cooler. A stainless steel sink and cooktop are located amidships on the starboard counter, with a refrigerator below. Lighted glass shelves are above the counters on each side.



The cabin on the Canyon 456 is an oasis of tranquility and a refuge from the heat or rain topside. Note the cabinets above the counters, the microwave, and wine cooler to the left and the refrigerator drawers to the right.



With nearby rod storage for those who eat and sleep fishing, the dining table serves double-duty as a sleeping platform with the addition of a fill-in cushion. The dinette seats four for dinner or cocktails and sleeps two. It is electrically actuated. A TV is on the forward bulkhead.



The galley has a two-burner glass stovetop and sink with refrigerator below. We like the cupholders next to the galley.



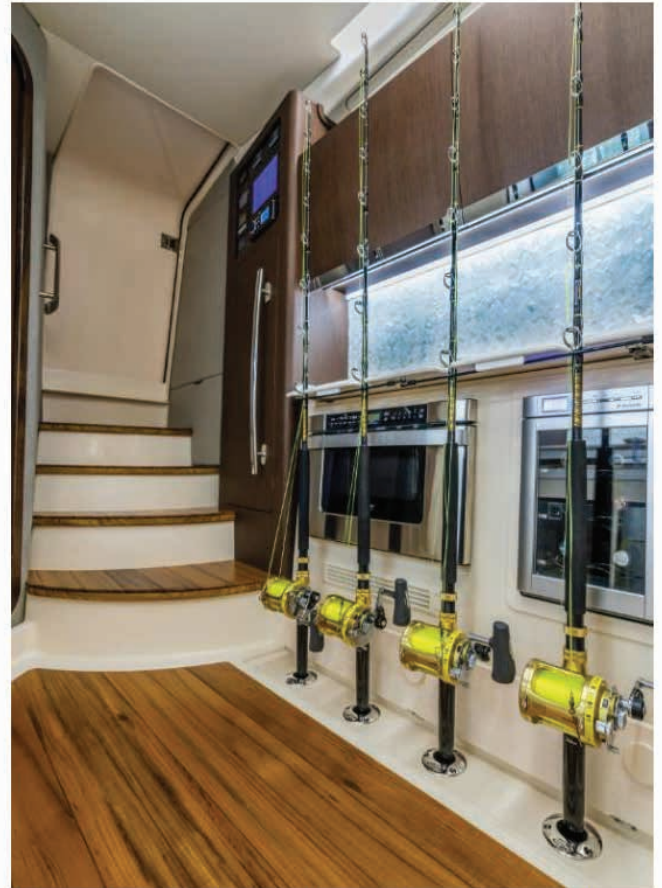
Looking aft we see the companionway stairs and entry to the head to starboard.



The head has full standing headroom and is remarkably large, thanks to the boat's 14' (4.27 m) beam. There is a separate shower stall. The toilet is a VacuFlush and there is a 20 gallon (76 L) holding tank.



Even the shower stall can perform double-duty as rod storage. The teak grate is standard.



Opposite the mini galley is another counter for food prep with appliances below, with a flip-up panel, notched and bungeed, to hold idle tackle. Rod storage is all over the boat, both inside and outside. The teak sole is standard.

Convertible Dinette. Forward center, there's an electronically-controlled solid sapele wood dining table inlaid with teak and brushed aluminum accents, with seating up to four. Simply electronically lower the table for a forward berth that sleeps two comfortably. Overhead, there is a screened hatch.

A 32" flatscreen television is centered on the forward bulkhead. There is retractable vertical storage for four rods, neatly set under the portside countertop, and hides away when not in use. Alongside the berth, port and starboard, are the innovative, patent-pending Integrated Rod Storage Slides™ securely stowing four more rods outboard.

Head Compartment. The head is to starboard, and includes a lighted, mirrored glass cabinet over the stainless steel sink, and a shower with a classic teak grid deck. A clever, elegant hinged fiberglass door partitions off the shower area, keeping the rest of the compartment dry, and creates an additional locker for another four rods. This luxurious cabin hosts lockable storage for a total of 12 rods.



This bow is made for entertaining and sunning. When in fishing mode, the tables can be dropped down to form a platform. Noted the clean deck forwards, with a through-the-stem anchor and pop-up cleats.

The Foredeck for Work and Play

On deck, forward of the cabin, the Canyon 456 provides an elegant lounge-and-leisure platform. Atop the trunk cabin, comfortable lounge cushions create a large space for sun worshippers. The bow seating area continues the theme of exceptional detail, comfort, and elegant style. There are two large plumbed, insulated boxes portside (43 and 123 quarts), and a huge 210-quart box starboard. Of course, they can be used as beverage coolers or storage.



A touch of a button moves the two bow tables up and down. Huge, insulated self-draining bins are under the seats and can serve as fishboxes.



A rotating seat back allows the seats forward to be used chaise-style with guests facing forward. Note the fine upholstery job. Remember, this is a center console extraordinaire.

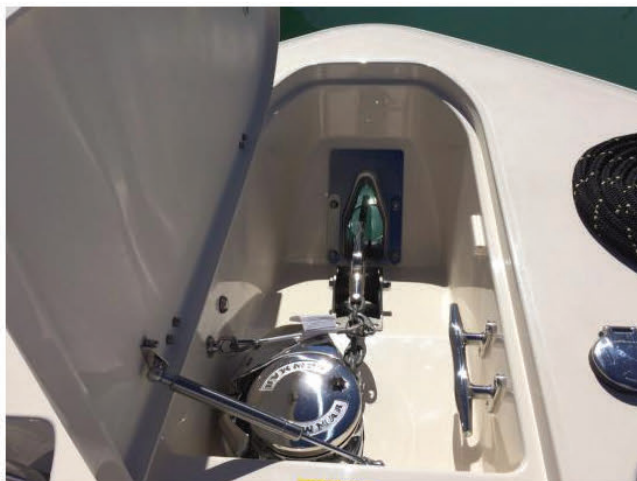


On the trunk cabin there is a built-in sun pad with deluxe chaise seating fold-down armrests. Note the rail around the cushions.

Dining and Sunning. Atop the storage boxes, deeply cushioned seating complemented by three-way positioned stowable backrests surrounds two motorized semi-circular fiberglass tables. When the tables are in the down position, they can be covered with cushions for yet another lounging platform. One notable advantage of the semicircular tables is that they allow access all the way to the bow and windlass, and loungers need not move out of the way.

Anchor rode storage can handle up to 400' of rode and 30' of chain. The windlass has controls at the bow and the helm. If fishermen are sight-casting off the bow, remove the cushions, and — voilà! — there's a large, strong casting platform.

The new flagship Canyon 456 epitomizes Grady-White's legacy of 59 years of building quality boats for the toughest condition. Here's a superb fishing yacht, true to its purebred sportfishing heart and soul that takes luxury and versatility to a new dimension.



The bow is kept clean thanks to this recessed ground tackle arrangement. The anchor is through the stem and note the large cleat for the anchor rode at right, something that many builders are omitting, but should not.



Moonlight illuminates the new Grady-White Canyon 456. We can picture taking her to the Bahamas or even Down Island. She is a well-thought-out, luxury sport fishing boat perfect for the hardcore fisherman and his family.

Observations

Simply put, we think this is one of the most innovative and remarkable Grady-White boats ever built. The attention to needed – or wanted – functionality is breathtaking. The execution shows that Grady-White can go toe-to-toe with most semi-custom center console builders when it has the size boat, and the budget, to work with.

Our guess is that a number of the good ideas seen in the Canyon 456 will trickle down to some of Grady's smaller boats, and the folks that don't need this much boat will want to find some of the same attributes in smaller center consoles.

Standard and Optional Features

Systems

Air Cond./Heat	Standard
Battery Charger/Converter	Standard
Head: Fixed	Standard
TV/DVD	Standard
Washdown: Raw Water	Standard
Water Heater	Standard
Windlass	Standard

Exterior Features

Outlet: 12-Volt Acc	Standard
Side Door	Standard

Boats More Than 30 Feet

Bow Thruster	Standard
Freezer	Standard
Generator	Standard

Galley

Microwave	Standard
Refrigerator	Standard
Stove	Standard



[About Us](#) | [Contact Us](#) | [Advertising](#) | [Terms](#) | [Privacy](#)

Copying or re-using any of the material, in whole or in part, on this site, including data, photos, articles and videos is strictly forbidden without the written permission of BoatTEST.com, LLC. Copyright © 2016 BoatTEST.com. All Rights Reserved.